



## M3 Soundbar

The M3 is simplicity redefined; beautifully engineered sound meets beautifully designed engineering. This is an elegantly compact soundbar with a big heart to fill your living room without the clutter of a full Hi-Fi system.

With Q Acoustic's new Intelligent Pre-Amplifier (**IPA™**) designed to seamlessly integrate into your home setup, the M3 is a true plug and play soundbar. Connect it into your home entertainment setup using the ARC HDMI input. Connect it and forget about it, the M3 becomes one with your TV, leaving you to discover the two sides of this unique product, music and movie.

Turn on the M3 and Music mode is enabled by default (We are an acoustics company after all!). Our built in digital *Bluetooth*® **aptX**® wireless input frees the world of music at your fingertips to fill your home with superbly detailed and dynamic audio reproduction. Discover subtle layers and beauty in your music that have been left previously unheard. Open your ears and enjoy music as it was intended!

Switch on the TV and the M3 automatically brings a clarity of speech and a depth of soundscapes that transforms your TV sound...and then you engage the **MoviEQ™**. Awaken the beast and your home will rumble with powerful bass for that full blooded movie experience! Boom! What more could you want?

Oh, we should say something about the looks, but, just look at it and enjoy!



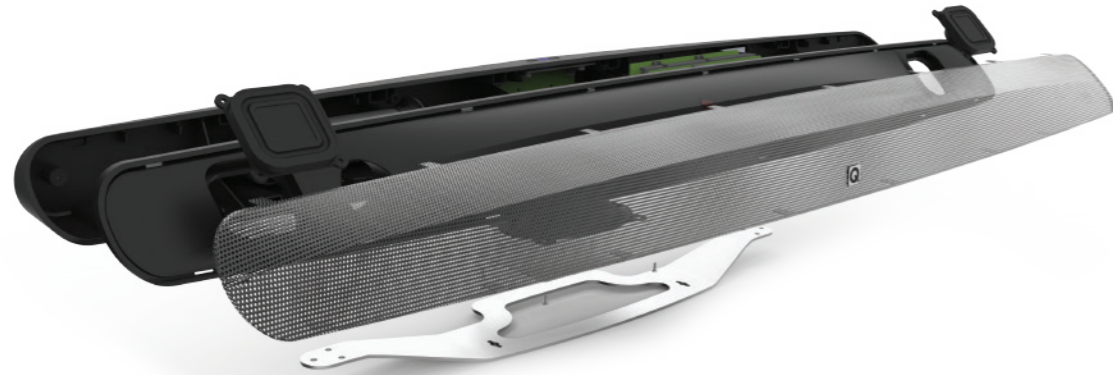
**ACOUSTICS**

QACOUSTICS.COM



# Key Features

- 2 x 20W + 40W integrated 2.1 hi-fi amplification.
- Room filling acoustics from wide dispersion BMR drivers and built in subwoofer.
- **MoviEQ™** for enhancing your movie and TV soundtracks.
- Equal loudness curve EQ matrix and dynamic multi-band subwoofer compression for enhanced low and high level listening.
- Adaptive acoustic voicing for On Cabinet, In Cabinet or On Wall mounting using a rear panel ON/IN/WALL switch.
- Rear panel gain switch to add an additional 6dB gain when using video source equipment that supply lower level digital signals. (1 = Normal, 2 = +6dB on OPT and HDMI)
- Resonance damping foot plate.
- HDMI Audio Return Channel (ARC 2 Channel PCM).
- Consumer Electronic Control (CEC).
- Up to 50ms Lip Sync, adjustable in 10ms steps.
- **Bluetooth® aptX®** digital input for wireless connectivity of all streaming devices.
- AVRCP 1.4 two way volume control.
- 24bit 96kHz Optical input.
- Low noise RCA line level input (2.1Vrms).
- Low noise AUX 3.5mm input (1.1Vrms).
- Q Acoustic's new Intelligent Pre-Amplifier (**IPA™**).



# Quick Setup

- Connect required inputs
- Connect mains cable
- Set rear panel EQ switch to the required location:
  - ON = On cabinet
  - IN = In cabinet
  - WALL = Wall mounted
- Power on M3
- Power on required source. IPA will detect and switch to highest priority source:
  - 1 = HDMI – Purple
  - 2 = OPT - White
  - 3 = BT – Blue - (Discoverable in Standby for Auto On)
  - 4 = Line In 1/2 – Green
- Press EQ button to turn on MoviEQ™ as required. LED will blink yellow:
  - MoviEQ™ On = 2 flashes and remain on.
  - MoviEQ™ Off = 2 flashes and remain off.
- Enjoy

# Specification

## Amplifier

Power output	80W (2 x 20W + 40W)
THD (at rated power)	<0.9%
Frequency response	+/-0.5dB 20Hz to 20kHz
S/N ratio (A-Wtd)	-85dB
Line in 1 (RCA phono) min. input sensitivity	1.0 Vrms
Line in 1 (RCA phono) input overload	2.2 Vrms
Line in 2 (3.5mm jack) min. input sensitivity	450 mVrms
Line in 2 (3.5mm jack) input overload	1.2 Vrms

## Acoustics

L&R drivers	BMR 58mm x 58mm
Subwoofer	Dual voice coil 100mm x 150mm
Crossover (Typical)	340Hz

## Power consumption

Deep Standby	<0.5 Watt
Idle	11 Watts
Power Rating	100~240V - 50~60Hz 100W

## Bluetooth®

Bluetooth® specification	V4.0 class 2 device
Latency	40ms
Internal stereo CODEC	16-bit
Stereo audio sample rate	Up to 48kHz
Music enhancements	<b>aptX®</b> , SBC, MP3, AAC
Support for	AVRCP 1.4, A2DP, 802.11 co-existence

## Weight and dimensions

(W x H x D)	1000mm x 70mm x 125mm
Height including foot	86mm
Net weight	4.0 kg

