

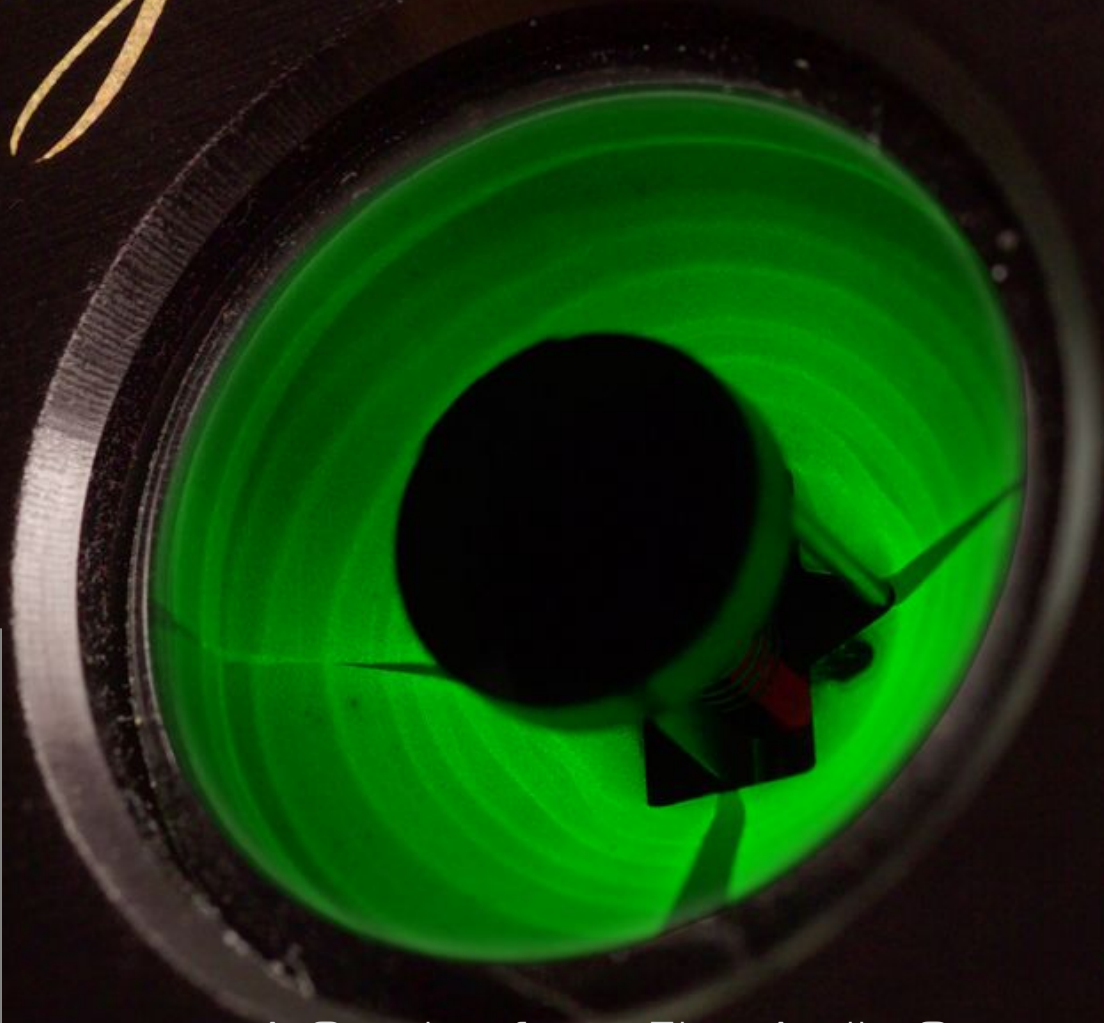


MAGNUM DYNALAB
PURE SOURCE AUDIO

MD 106T

Analog FM Tuner

analog FM TUNER



- MD REFERENCE 6922 VACUUM TUBES
- .093 THICK PRINTED CIRCUIT BOARD
- BALANCED GOLD PLATED OUTPUT
- SHIELDED TORROIDAL TRANSFORMER
- MUNDORF SUPREME CAPACITORS
- WBT UNBALANCED (RCA) OUTPUT
- ULTRA LINEAR CAPACITORS
- KIMBER HYPER-PURE COPPER WIRING
- BURR BROWN OP AMPS

FEATURES

A Staple of any Fine Audio System

MD 106 Triode FM Tuner

MD 106T

HIGHLIGHTS

MD REFERENCE 6922 VACUUM TUBES

Included in the audio amplification stage, our 6922 MD Reference Tubes are designed to our exacting standards and tested individually for specifications. Each tube is fitted with coolers, maintaining constant temperatures to ensure maximum performance under a variety of operating conditions.

.093 THICK PRINTED CIRCUIT BOARD

A solid footing to minimize any residual vibration in the chassis to allow all components to operate at peak performance. Further, all contact points are generously gold plated to ensure complete signal transfer over the long haul.

BALANCED OUTPUT WITH GOLD PLATED NEUTRIK CONNECTORS

Fully complimentary circuit insures a perfectly balanced signal, and exact dimensions ensure maximum conductivity.

SHIELDED TORROIDAL TRANSFORMER

Coupled with a high grade aluminum chassis, device is completely shielded from stray signals and transient noises. The high grade custom designed transformer reduces the overall noise floor of the tuner.

MUNDORF SUPREME CAPACITORS

Used as the bypass, creating sound purity consistent with the original signal.

WBT UNBALANCED (RCA) OUTPUT CONNECTORS

Low tolerance connector made of highly ductile "OFC" copper, with 24 carat gold plated contacts. Ensures a perfect signal transfer for interconnects.

ULTRA LINEAR CAPACITORS IN THE POWER SUPPLY

Provides a pure source of DC power, and improves the frequency response of the tuner.

KIMBER HYPER-PURE COPPER WIRING

High grade internal wiring provides a clean, uncolored path for the signal through the audio stage of the unit.

BURR BROWN OP AMPS WITH BLACK GATE CAPACITORS

Proven performance from industry leading suppliers with zero degradation over the long haul.



FLAGSHIP

A Staple of Any Fine Audio System

Introduced in 2003, the MD 106T is one of our flagship products here at Magnum Dynalab. As the original offering in our successful series of Hybrid FM tuners, the MD 106 Triode is the first of Magnum Dynalab's FM tuners to use tube technology in the audio amplification stage. Consistent with our design philosophy to separate the analog R.F. section and the audio section, the MD 106T provides a Magnum tuner for those customers with a special partiality for the tube experience.

Like all Magnum Dynalab tuners, the MD 106T employs an in-house designed and manufactured analog front end that utilizes a specially aligned five stage front end with precise hand-matched components in the critical areas. In any FM tuner, the front end is of most importance to maximizing sensitivity and selectivity while minimizing distortion, so that the signal sent to the audio section is as pure as possible. It is for this reason that our front ends are designed and built by us, for only us. There is no company in the world that does so, nor is there a company that we can count on to deliver a front end worthy of inclusion in our devices.

Further, the 106T is also the beneficiary of the unique Magic Eye Tuning meter, providing an accurate and elegant tuning mechanism to ensure the perfect frequency is fed through the tuner's front end. The stately symmetry of the 106T bestows a little mood lighting while in service, and is an exclamation point on the outstanding sonic clarity, definitive sound staging and raw finesse of a truly fine audio product.

RF

Primary RF Highlights



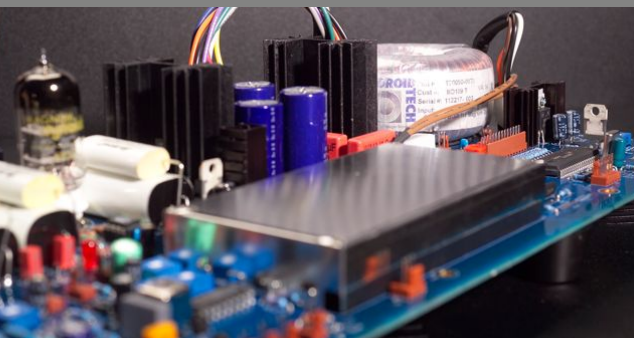
Tunable five stage ANALOG front end: Five stages of RF filtration, providing station separation without affecting stereo separation. As always, the front end is a custom designed and manufactured in-house design.

Magic Tuning Eye: Embedded in faceplate for the most precise and accurate center tuning

Multiple Bandwidth Settings: The MD 106T offers both Ultra Wide and Narrow IF Bandwidth settings to produce the best SOUND where adjacent channel interference is, or is not a factor.

Dual AGC (automatic gain control) stage: This automatic circuit design eliminates the need for a local and distant switch, altering the amount of relative gain that's added to the incoming signal.

Auto Blend RF Circuit: Automatically monitors and adjusts stereo separation to maximize "stereo quieting", insuring the quietest stereo signal as possible. This greatly eliminates background noise.



Precision tunable matched IF (intermediate frequency) amplifiers: Ensures consistent specifications for adjacent channel separation, alternate channel separation and low distortion

Precision Voltage Stabilizers in the Power Supply: Ensures precise tuning of the incoming RF signal

Dual Antenna Inputs: Provides the flexibility to position different antennas in multiple locations to accommodate differing incoming signals.

Defeatable Mute: Eliminates any interstation noise while tuning

Analog Meters: Functional and easy-to-read multipath and signal strength measurements showcased on the large faceplate.

Fully shielded RF section-eliminates any interference from stray signals

AUDIO

Audio Stage & Power Supply

To complement this world class R.F. section, our design team has developed a world class triode audio section to perform at the same high level our customers have come to expect from Magnum Dynalab products. Specifically, we have paid special attention to three critical areas of the design.

1. First and the most important, we achieve a complete grounding circuit to remove all stray ground path signals that alter the micro-information as it moves through the device, allowing the listener to grasp the full emotion of the music.

2. Secondly, the design of the power supply utilizes a special path and high-grade components, which eliminates any ripple effect from the AC source that would interfere with the nuances in the music.

3. Lastly but no less important is the zero feedback design that does not alter the original waveform. Our design team consists of music lovers, and the design in the 106's audio section allows our customers to feel the same passion for the music as the creator of the original recording.



In addition to our primary design criterion, the MD 106T features a variety of features in the audio stage and power supply that complement the R.F. section. It is a product designed and manufactured with great precision and care, with specific standards for all components included in the device. Whether it is the exacting specifications required for each MD Reference 6922 tube, or the specific thickness of each circuit board inside the device, the MD 106T is an audio product for the most discerning of customers.



SPECS

Specifications

- Usable sensitivity (Mono) – **0.7 u V 9.0 dBf**
- 50 dB quieting (Mono) – **2.0 u V 9.9 dBf**
- 50 dB quieting (Stereo) – **2.3 u V 25.0 dBf**
- Capture ratio – **1.5 dB**
- Image rejection – **110.0 dB**
- Signal to noise ratio – **80.0 dB**
- Alternate channel (Wide) – **40.0 dB**
- Alternate channel (Narrow) – **70.0 dB**
- Adjacent channel (Wide) – **3.0 dB**
- Adjacent channel (Narrow) – **35.0 dB**
- Adjacent channel (Super Narrow) – **48.0 dB**
- THD (Mono) – **0.10 %**
- THD (Stereo) – **0.18 %**
- Stereo separation – **50.0 dB**
- AM suppression – **70.0 dB**
- SCA rejection – **80.0 dB**
- IF rejection – **80.0 dB**
- 19 KHz and 38 KHz component rejection – **75.0 dB**
- Audio frequency response (+/- 1 dB) – **15 Hz – 17KHz**
- Balanced audio output – **2.2 V**
- Line audio output (RCA) – **1.0 V**
- Line power (Must be specified) (110/220/230/240) – **VAC**
- Dimensions (inches H.W.D.) – **4 x 19 x 15**
- Dimensions (cm H.W.D.) – **11.43 x 48.3 x 38.1**
- Weight (lbs./kgs) – **18/7.96**
- Power consumption (Typ/Max) – **50w/100w**
- Tube Specifications:
- Filament current (max) 330 mA (min) 270 mA
- Anode current (1) (max) 1.07 mA (min) 0.92 mA
- Anode current (2) (max) 1.07 mA (min) 0.92 mA
- Total harmonic distortion < 1.8%
- Tubes position 1 and 2 – MD Reference Silver 6922

MAGNUM DYNALAB LTD. RESERVES THE RIGHT TO CHANGE OR MODIFY THE SPECIFICATIONS WITHOUT FURTHER NOTICE



MAGNUM DYNALAB
PURE SOURCE AUDIO

Magnum Dynalab Ltd.
8 Strathearn Avenue, Unit 9
Brampton, Ontario, Canada L6T 4L9
P: 905.791.5888
F: 905.791.5583
TF in North America: 800.551.4130
info@magnumdynalab.com
www.magnumdynalab.com